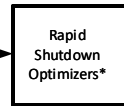
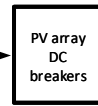
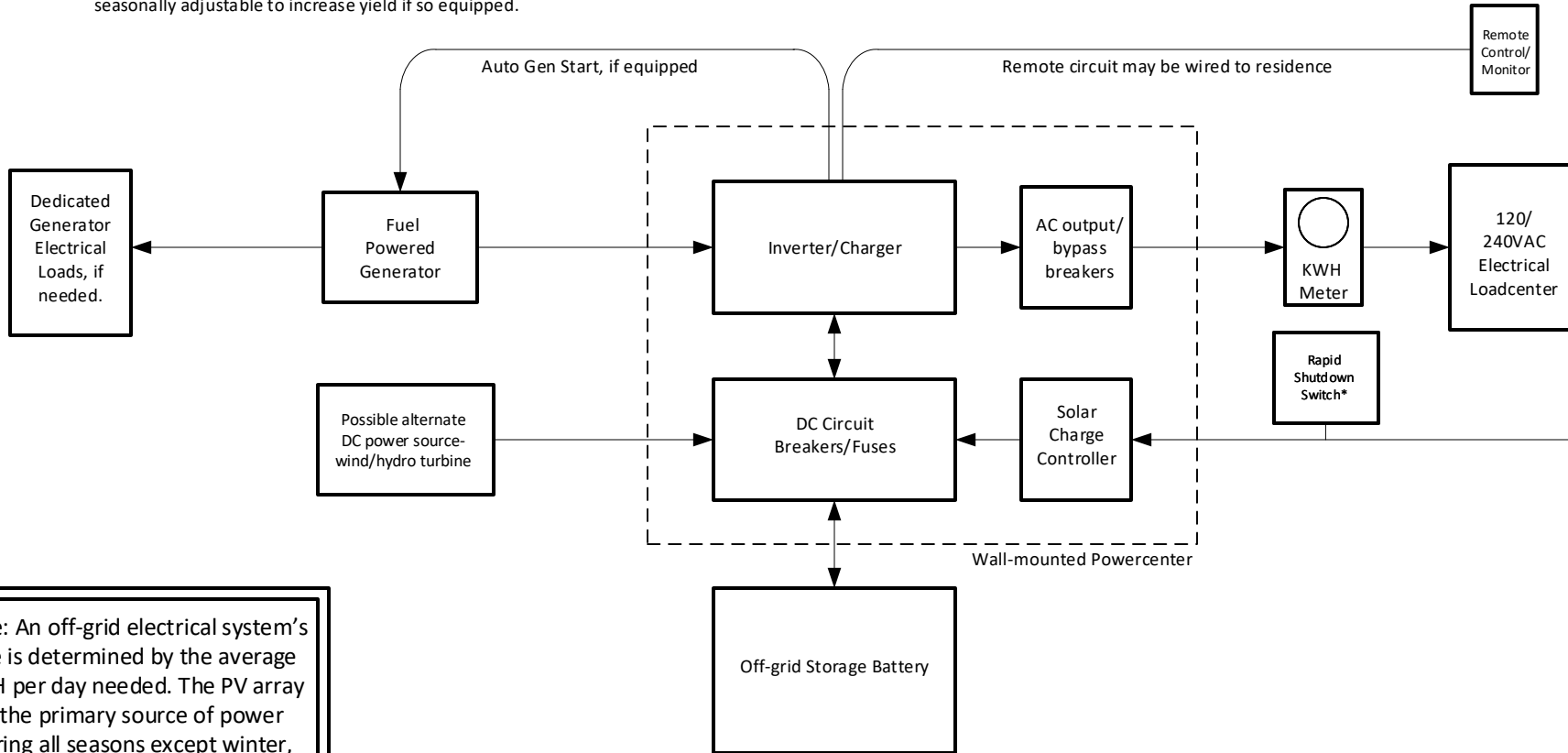


Solar PV modules are fastened to a roof or ground-mounted support structure angled south. The angle of the solar array may be seasonally adjustable to increase yield if so equipped.



*Required by code on roof mounted solar arrays

DC Solar output circuit wires in conduit



Note: An off-grid electrical system's size is determined by the average KWH per day needed. The PV array is the primary source of power during all seasons except winter, when the use of a backup generator is typically required.